

Anchor screws

Anchor screw 3.5 mm

Thread diameter 3.5 mm
 Core diameter 2.4 mm
 Pitch 1.25 mm
 Material: titanium alloy

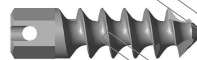


Spiral drill: 99010-25195 (3 faceted)

L	Cat. No titanium alloy
8 mm	32250-35008
10 mm	32250-35010
12 mm	32250-35012
14 mm	32250-35014
16 mm	32250-35016
18 mm	32250-35018
20 mm	32250-35020

Anchor screw 4.0 mm

Thread diameter 4.0 mm
 Core diameter 1.9 mm
 Pitch 1.75 mm
 Material: titanium alloy

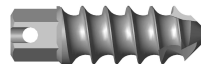


Spiral drill: 99010-20115 (3 faceted)

L	Cat. No titanium alloy
8 mm	32250-40008
10 mm	32250-40010
12 mm	32250-40012
14 mm	32250-40014
16 mm	32250-40016
18 mm	32250-40018
20 mm	32250-40020

Anchor screw 4.5 mm

Thread diameter 4.5 mm
 Core diameter 3.0 mm
 Pitch 1.75 mm
 Material: titanium alloy



Spiral drill: 99010-32180 (3 faceted)

L	Cat. No titanium alloy
8 mm	32250-45008
10 mm	32250-45010
12 mm	32250-45012
14 mm	32250-45014
16 mm	32250-45016
18 mm	32250-45018
20 mm	32250-45020

Femoral neck screws

Femoral neck screw - R
8 mm

Thread diameter	8.0 mm
Core diameter	5.0 mm
Pitch	2.75 mm
Cannulation	2.2 mm
Hex width	6.3 mm
Thread length	25 mm

Material: steel or titanium alloy



Cat. No steel	Cat. No titanium alloy	L
12610-80075	32610-80075	75 mm
12610-80080	32610-80080	80 mm
12610-80085	32610-80085	85 mm
12610-80090	32610-80090	90 mm
12610-80095	32610-80095	95 mm
12610-80100	32610-80100	100 mm
12610-80105	32610-80105	105 mm
12610-80110	32610-80110	110 mm
12610-80115	32610-80115	115 mm
12610-80120	32610-80120	120 mm
12610-80125	32610-80125	125 mm
12610-80130	32610-80130	130 mm
12610-80135	32610-80135	135 mm
12610-80140	32610-80140	140 mm
12610-80145	32610-80145	145 mm

Femoral neck screw - R
9.5 mm

Thread diameter	9.5 mm
Core diameter	6.0 mm
Pitch	2.75 mm
Cannulation	2.2 mm
Hex width	6.3 mm
Thread length	25 mm

Material: steel or titanium alloy



Cat. No steel	Cat. No titanium alloy	L
12610-95075	32610-95075	75 mm
12610-95080	32610-95080	80 mm
12610-95085	32610-95085	85 mm
12610-95090	32610-95090	90 mm
12610-95095	32610-95095	95 mm
12610-95100	32610-95100	100 mm
12610-95105	32610-95105	105 mm
12610-95110	32610-95110	110 mm
12610-95115	32610-95115	115 mm
12610-95120	32610-95120	120 mm
12610-95125	32610-95125	125 mm
12610-95130	32610-95130	130 mm
12610-95135	32610-95135	135 mm
12610-95140	32610-95140	140 mm
12610-95145	32610-95145	145 mm

Femoral neck screws

Femoral neck screw – M 8mm

Thread diameter	8.0 mm
Core diameter	5.0 mm
Pitch	2.75 mm
Cannulation	2.2 mm
Thread length	25 mm

Material: steel or titanium alloy



L	Cat. No steel	Cat. No titanium alloy
75 mm	12600-80075	32600-80075
80 mm	12600-80080	32600-80080
85 mm	12600-80085	32600-80085
90 mm	12600-80090	32600-80090
95 mm	12600-80095	32600-80095
100 mm	12600-80100	32600-80100
105 mm	12600-80105	32600-80105
110 mm	12600-80110	32600-80110
115 mm	12600-80115	32600-80115
120 mm	12600-80120	32600-80120
125 mm	12600-80125	32600-80125
130 mm	12600-80130	32600-80130
135 mm	12600-80135	32600-80135
140 mm	12600-80140	32600-80140

Femoral neck screw – M 9.5mm

Thread diameter	9.5 mm
Core diameter	6.5 mm
Pitch	2.75 mm
Cannulation	2.2 mm
Thread length	25 mm

Material: steel or titanium alloy



L	Cat. No steel	Cat. No titanium alloy
75 mm	12600-95075	32600-95075
80 mm	12600-95080	32600-95080
85 mm	12600-95085	32600-95085
90 mm	12600-95090	32600-95090
95 mm	12600-95095	32600-95095
100 mm	12600-95100	32600-95100
105 mm	12600-95105	32600-95105
110 mm	12600-95110	32600-95110
115 mm	12600-95115	32600-95115
120 mm	12600-95120	32600-95120
125 mm	12600-95125	32600-95125
130 mm	12600-95130	32600-95130
135 mm	12600-95135	32600-95135

Washer for femoral neck screw 13x7.3 mm

Cat . No: 13010-13073 or 33010-13073

Material: steel or titanium alloy



Supporting plate for femoral neck screw

Cat . No: 13070-00002 or 33070-00002
13070-00003 or 33070-00003

Material: steel or titanium alloy



Pelvic screws

Pelvic screw 9.5 mm

Thread diameter	9.5 mm
Core diameter	6.0 mm
Pitch	2.75 mm
Cannulation	3.3 mm
Hex width	8.0 mm

Material: steel or titanium alloy



Cat. No steel	Cat. No titanium alloy	L
32 mm		
12621-95065	32621-95065	65 mm
12621-95070	32621-95070	70 mm
12621-95075	32621-95075	75 mm
12621-95080	32621-95080	80 mm
12621-95085	32621-95085	85 mm
12621-95090	32621-95090	90 mm
12621-95095	32621-95095	95 mm
12621-95100	32621-95100	100 mm
12621-95105	32621-95105	105 mm
12621-95110	32621-95110	110 mm
12621-95115	32621-95115	115 mm
12621-95120	32621-95120	120 mm
12621-95125	32621-95125	125 mm
12621-95130	32621-95130	130 mm
12621-95135	32621-95135	135 mm
12621-95140	32621-95140	140 mm
12621-95145	32621-95145	145 mm
12621-95150	32621-95150	150 mm
12621-95155	32621-95155	155 mm
12621-95160	32621-95160	160 mm
12621-95165	32621-95165	165 mm
12621-95170	32621-95170	170 mm

Cat. No steel	Cat. No titanium alloy	L
48 mm		
12622-95065	32622-95065	65 mm
12622-95070	32622-95070	70 mm
12622-95075	32622-95075	75 mm
12622-95080	32622-95080	80 mm
12622-95085	32622-95085	85 mm
12622-95090	32622-95090	90 mm
12622-95095	32622-95095	95 mm
12622-95100	32622-95100	100 mm
12622-95105	32622-95105	105 mm
12622-95110	32622-95110	110 mm
12622-95115	32622-95115	115 mm
12622-95120	32622-95120	120 mm
12622-95125	32622-95125	125 mm
12622-95130	32622-95130	130 mm
12622-95135	32622-95135	135 mm
12622-95140	32622-95140	140 mm
12622-95145	32622-95145	145 mm
12622-95150	32622-95150	150 mm
12622-95155	32622-95155	155 mm
12622-95160	32622-95160	160 mm
12622-95165	32622-95165	165 mm
12622-95170	32622-95170	170 mm

Washers, nuts

Double holed washer for 6.5 mm cancellous screw

Material: steel or titanium alloy



Cat. No steel	Cat. No titanium alloy
13030-20065	33030-20065

Double holed washer for 4 mm cancellous screw

Material: steel or titanium alloy



Cat. No steel	Cat. No titanium alloy
13030-19040	33030-19040

Spiked washer for 3.5-4.5 mm screw

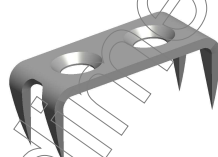
Material: steel or titanium alloy



Ø mm	Cat. No steel	Cat. No titanium alloy
3.5	13040-10035	33040-10035
4.5	13040-10045	33040-10045

Double spiked washer

Material: steel or titanium alloy



Cat. No steel	Cat. No titanium alloy
13040-22035	33040-22035

Cortical nut

Material: steel or titanium alloy



Cat. No steel	Cat. No titanium alloy
13060-08045	33060-08045

Washer for ligament – for 6.5 mm screw

Material: steel or titanium alloy



Cat. No steel	Cat. No titanium alloy
13050-13060	33050-13060

Compression screw 3.9/3 mm,
double-threaded

Thread diameter	3.9/3 mm
Core diameter	3.1/1.9 mm
Pitch	1/1.25 mm
Hex width	1.5 mm

Material: steel or titanium alloy



L	Cat. No steel	Cat. No titanium alloy
12 mm	12801-43012	32801-43012
14 mm	12801-43014	32801-43014
16 mm	12801-43016	32801-43016
18 mm	12801-43018	32801-43018
20 mm	12801-43020	32801-43020
22 mm	12801-43022	32801-43022
24 mm	12801-43024	32801-43024
26 mm	12801-43026	32801-43026
28 mm	12801-43028	32801-43028
30 mm	12801-43030	32801-43030

Compression screw 3.9/3 mm,
double-threaded, cannulated

Thread diameter	3.9/3 mm
Core diameter	3.1/2.0 mm
Pitch	1/1.25 mm
Hex width	2.0 mm
Cannulation	1.2 mm

Material: steel or titanium alloy



L	Cat. No steel	Cat. No titanium alloy
12 mm	12800-43012	32800-43012
14 mm	12800-43014	32800-43014
16 mm	12800-43016	32800-43016
18 mm	12800-43018	32800-43018
20 mm	12800-43020	32800-43020
22 mm	12800-43022	32800-43022
24 mm	12800-43024	32800-43024
26 mm	12800-43026	32800-43026
28 mm	12800-43028	32800-43028
30 mm	12800-43030	32800-43030

Compression screws

Compression screw 5/4 mm double-threaded, solid

Thread diameter	5/4 mm
Core diameter	3.9/2.2 mm
Pitch	1.25/1.75 mm
Hex width	2.5 mm

Material: steel or titanium alloy



L	Cat. No steel	Cat. No titanium alloy
16 mm	12801-54016	32801-54016
18 mm	12801-54018	32801-54018
20 mm	12801-54020	32801-54020
22 mm	12800-54022	32801-54022
24 mm	12801-54024	32801-54024
26 mm	12801-54026	32801-54026
28 mm	12801-54028	32801-54028
30 mm	12801-54030	32801-54030
32 mm	12801-54032	32801-54032
34 mm	12801-54034	32801-54034
36 mm	12801-54036	32801-54036
38 mm	12801-54038	32801-54038
40 mm	12801-54040	32801-54040
45 mm	12801-54045	32801-54045
50 mm	12801-54050	32801-54050
55 mm	12801-54055	32801-54055
60 mm	12801-54060	32801-54060

Compression screw 5/4 mm double-threaded, cannulated

Thread diameter	5/4 mm
Core diameter	3.9/2.2 mm
Pitch	1.25/1.75 mm
Hex width	2.5 mm
Cannulation	1.2 mm

Material: steel or titanium alloy



L	Cat. No steel	Cat. No titanium alloy
16 mm	12800-54016	32800-54016
18 mm	12800-54018	32800-54018
20 mm	12800-54020	32800-54020
22 mm	12800-54022	32800-54022
24 mm	12800-54024	32800-54024
26 mm	12800-54026	32800-54026
28 mm	12800-54028	32800-54028
30 mm	12800-54030	32800-54030
32 mm	12800-54032	32800-54032
34 mm	12800-54034	32800-54034
36 mm	12800-54036	32800-54036
38 mm	12800-54038	32800-54038
40 mm	12800-54040	32800-54040
45 mm	12800-54045	32800-54045
50 mm	12800-54050	32800-54050
55 mm	12800-54055	32800-54055
60 mm	12800-54060	32800-54060

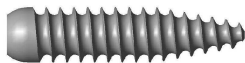
Interference screws

Interference screw 7 mm

Thread diameter	7.0 mm
Core diameter	5.0 mm
Pitch	1.75 mm
Hex width	3.5 mm

Material: steel or titanium alloy

L	Cat. No steel	Cat. No titanium alloy
20 mm	12811-70020	32811-70020
25 mm	12811-70025	32811-70025
30 mm	12811-70030	32811-70030
35 mm	12811-70035	32811-70035
40 mm	12811-70040	32811-70040



Spiral drill: 99010-50195 (3faceted)

Screwdriver: 99160-35145

Interference screw 7 mm, cannulated

Thread diameter	7.0 mm
Core diameter	5.0 mm
Pitch	1.75 mm
Hex width	3.5 mm
Cannulation	2.2 mm

Material: steel or titanium alloy

L	Cat. No steel	Cat. No titanium alloy
20 mm	12810-70020	32810-70020
25 mm	12810-70025	32810-70025
30 mm	12810-70030	32810-70030
35 mm	12810-70035	32810-70035
40 mm	12810-70040	32810-70040



Spiral drill: 99030-50180 (3faceted)

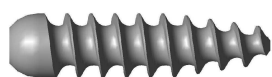
Screwdriver: 99171-35145

Interference screws

Interference screw 9 mm

Thread diameter	9.0 mm
Core diameter	5.5 mm
Pitch	2.75 mm
Hex width	3.5 mm

Material: steel or titanium alloy



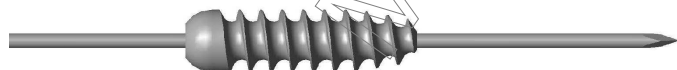
Spiral drill: 99010-50195 (3faceted)
Screwdriver: 99160-35145

L	Cat. No steel	Cat. No titanium alloy
20 mm	12811-90020	32811-90020
25 mm	12811-90025	32811-90025
30 mm	12811-90030	32811-90030
35 mm	12811-90035	32811-90035
40 mm	12811-90040	32811-90040

Interference screw 9 mm, cannulated

Thread diameter	9.0 mm
Core diameter	5.5 mm
Pitch	2.75 mm
Hex width	3.5 mm
Cannulation	2.2 mm

Material: steel or titanium alloy



Spiral drill: 99030-50180 (3faceted)
Screwdriver: 99171-35145

L	Cat. No steel	Cat. No titanium alloy
20 mm	12810-90020	32810-90020
25 mm	12810-90025	32810-90025
30 mm	12810-90030	32810-90030
35 mm	12810-90035	32810-90035
40 mm	12810-90040	32810-90040

Washers, nuts

Ø 13 mm washer for 6.5 mm cancellous screw

Material: steel or titanium alloy



Cat. No steel	Cat. No titanium alloy
13010-13068	33010-13068

Ø 7 mm washer for 4.0 mm cancellous screw

Material: steel or titanium alloy



Cat. No steel	Cat. No titanium alloy
13010-07042	33010-07042

Ø 4.2 mm washer for 1.5-2 mm
cortical screw

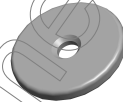
Material: steel or titanium alloy



Cat. No steel	Cat. No titanium alloy
13010-04222	33010-04222

Washer for fastening wire

Material: steel or titanium alloy



Cat. No steel	Cat. No titanium alloy
13020-08015	33020-08015

Button for tendon stitches

Material: steel or titanium alloy



Cat. No steel	Cat. No titanium alloy
13020-08215	33020-08215

Washers, nuts

Washer for ligament - 4 mm screw

Material: steel or titanium alloy



Cat. No steel	Cat. No titanium alloy
13050-13042	33050-13042

Washer for ligament – 2.7 mm screw

Material: steel or titanium alloy



Cat. No steel	Cat. No titanium alloy
13050-07032	33050-07032

Washer for pelvic screw

Material: steel or titanium alloy



Cat. No titanium alloy
33010-13088

Washer for femoral neck screw 13x7.3 mm

Material: steel or titanium alloy



Cat. No steel	Cat. No titanium alloy
13010-13073	33010-13073

Washer for tendon stitches

Material: steel or titanium alloy



Cat. No steel	Cat. No titanium alloy
13050-17010	33050-17010

Supporting plate for femoral neck screw

Material: steel or titanium alloy



Cat. No	Cat. No
13070-00002	33070-00002
13070-00003	33070-00003